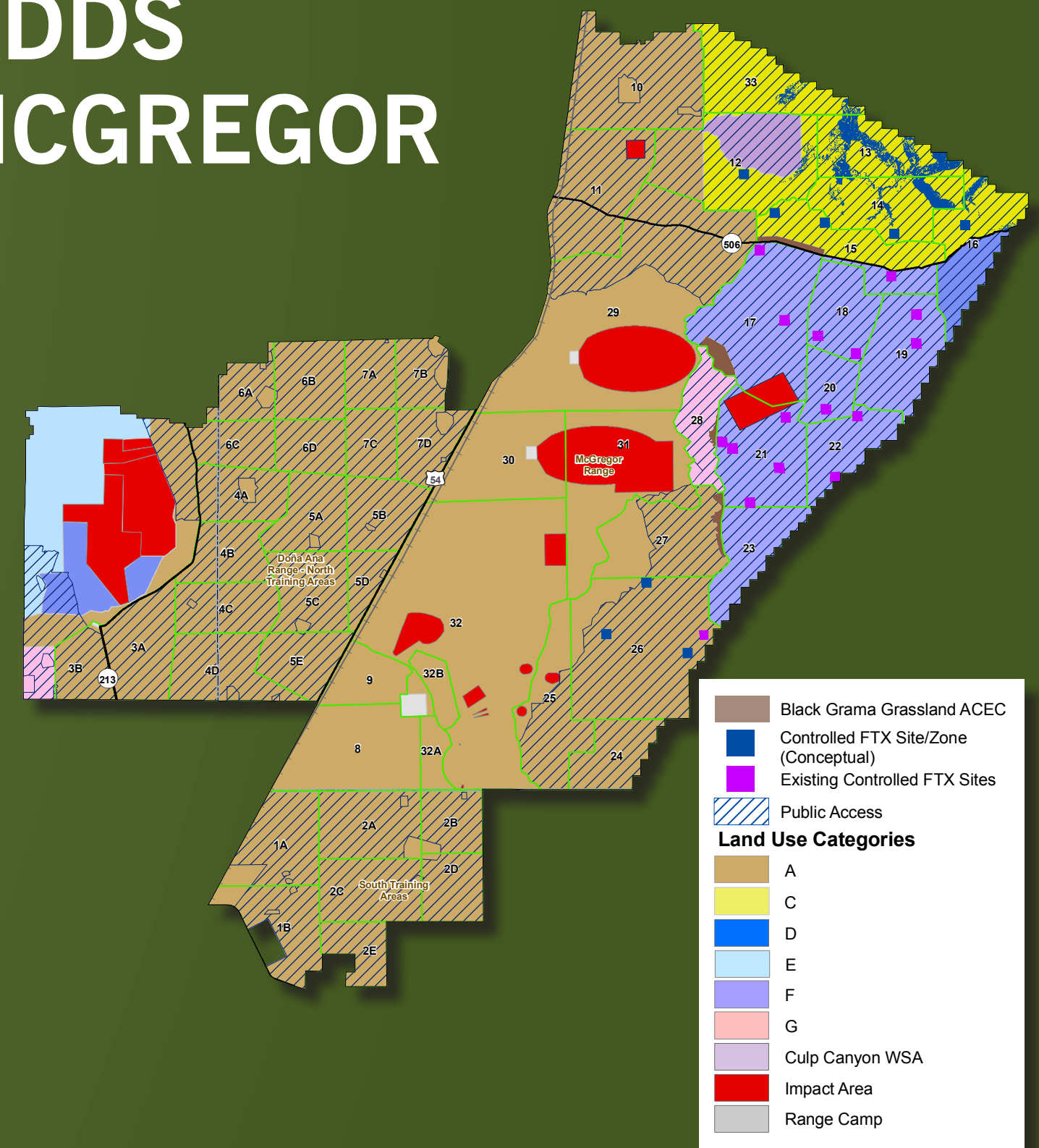


# Land Use Changes

FBTC Land Use Category	Military Uses											
	Off-Road Vehicle Maneuver: Heavy	Off-Road Vehicle Maneuver: Light	On-Road Vehicle Maneuver	Dismounted Maneuver	Aircraft Operations	Controlled FTX	Mission Support Facilities	Live-Fire	SDZ / Safety Footprint	Surface Impact	Range Camps	Environmental Management
A	•	•	•	•	•	•	•	•	•	•	•	•
B	•	•	•	•	•	•	•	•	•	•	•	•
C	•	•	•	•	•	•	•	•	•	•	•	•
D	•	•	•	•	•	•	•	•	•	•	•	•
E	•	•	•	•	•	•	•	•	•	•	•	•
F	•	•	•	•	•	•	•	•	•	•	•	•
G	•	•	•	•	•	•	•	•	•	•	•	•
Wilderness Study Area				•	•	•	•	•	•	•	•	•
Impact Areas				•	•	•	•	•	•	•	•	•
Range Camps				•	•	•	•	•	•	•	•	•

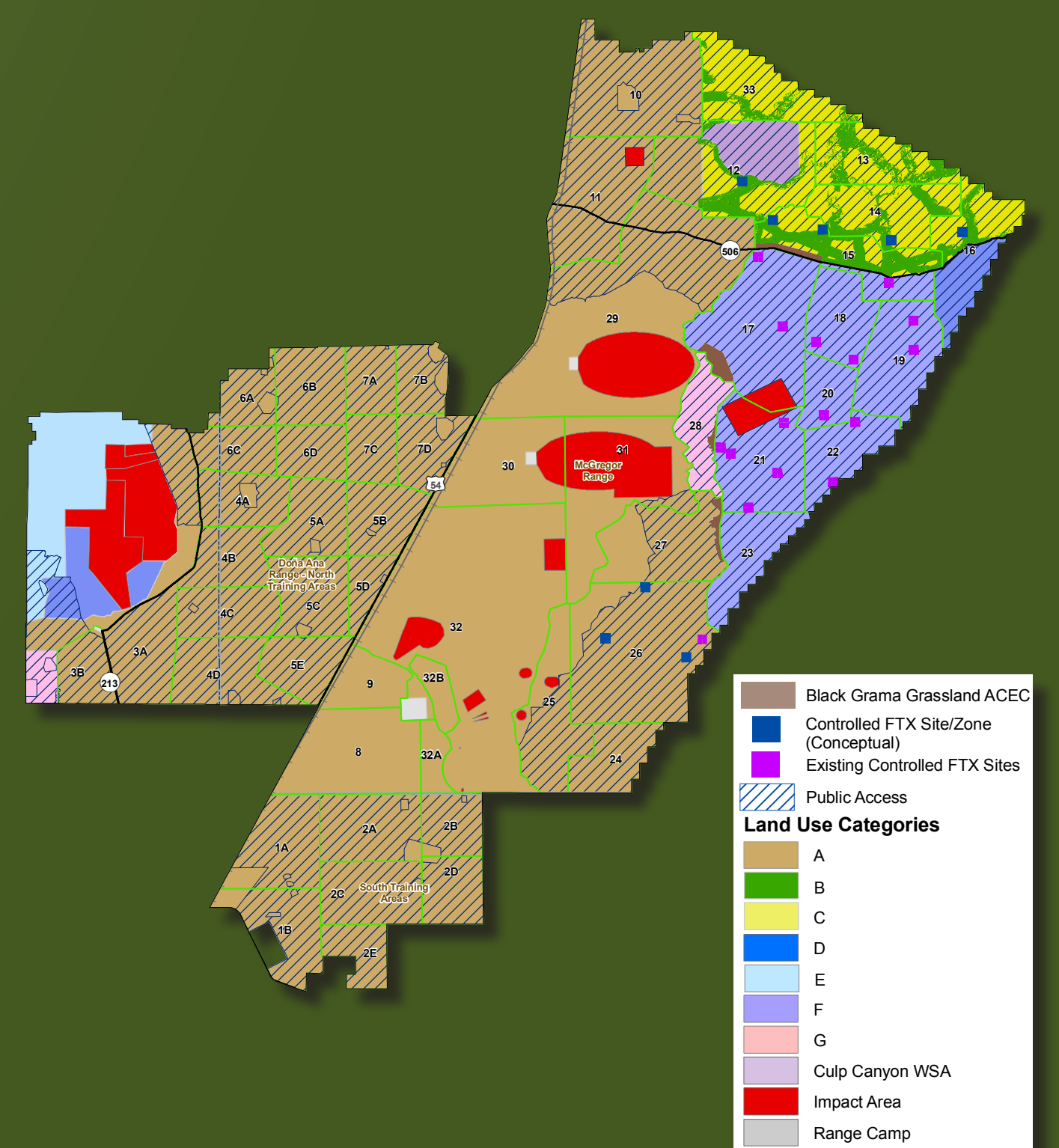
## Land Use Alternative 3 (LU-3): LU-2 PLUS ADDS LAND USE CATEGORY C IN NORTHEAST MCGREGOR RANGE NORTH OF HIGHWAY 506

- Allows establishment of Controlled FTX, and Mission Support Facilities, and Live Fire uses in NE McGregor
- Establishes 5 km<sup>2</sup> of Controlled FTX sites, which affects 1% of the Northeast McGregor Range North of Highway 506
- Establishes Controlled FTX zones in the Sacramento Mountains, which affects 9% of the Northeast McGregor Range North of Highway 506
- All Controlled FTX areas would be within 500m of existing roads and predominately on slopes of less than 30% (15 degrees)



## Land Use Alternative 4 (LU-4): LU-3 PLUS ADDS LAND USE CATEGORY B IN NORTHEAST MCGREGOR RANGE NORTH OF HIGHWAY 506

- Allows Off-road Vehicle Maneuver by light wheeled vehicles within 500m of existing roads on slopes of less than 30% (15 degrees)
- Affects approximately 27% of the Northeast McGregor Range North of Highway 506



## Land Use Alternative 5 (LU-5): LU-4 PLUS ESTABLISHING 3 KM<sup>2</sup> OF CONTROLLED FTX SITES ON OTERO MESA

- Establishes 3 km<sup>2</sup> of Controlled FTX sites adjacent to existing roads South of Highway 506
- Affects less than 1% of the Otero Mesa South of Highway 506

